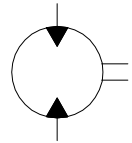


□ **YMS SERIES HYDRAULIC MOTOR**

YMS series motor adapt the advanced Gerolor gear set design with disc distribution flow and high pressure. The unit can be supplied the individual variant in operating multifunction in accordance with requirement of applications.

Characteristic Features:

- Advanced manufacturing devices for the Gerolor gear set, which use low pressure of start-up, provide smooth and reliable operation and high efficiency.
- The output shaft adapts in tapered roller bearings that permit high axial and radial forces. The case can offers capacities of high pressure and high torque in the wide of applications.
- Advanced design in disc distribution flow, which can automatically compensate in operating with high volume efficiency and long life, provide smooth and reliable operation



SYMBOL

SPECIFICATIONS

Type		YMS 80	YMS 100	YMS 125	YMS 160	YMS 200	YMS 250	YMS 315	YMS 375
Geometric Displacement (cm³/rev.)		80.6	100.8	125	157.2	200	252	314.5	370
Max. Speed (rpm)	Cont.	800	748	600	470	375	300	240	200
	Int.	988	900	720	560	450	360	280	240
Max. Torque (Nm)	Cont.	190	240	310	316	400	450	560	536
	Int.	240	300	370	430	466	540	658	645
	Peak	260	320	400	472	650	690	740	751
Max. Output (kW)	Cont.	15.9	18.8	19.5	15.6	15.7	14.1	14.1	11.8
	Int.	20.1	23.5	23.2	21.2	18.3	17.0	18.9	17
Max. Pressure Drop (MPa)	Cont.	17.5	17.5	17.5	15	14	12.5	12	10
	Int.	21	21	21	21	16	16	14	12
	Peak	22.5	22.5	22.5	22.5	22.5	20	18.5	14
Max. Flow (L/min.)	Cont.	65	75	75	75	75	75	75	75
	Int.	80	90	90	90	90	90	90	90
Max. Inlet Pressure (MPa)	Cont.	25	25	25	25	25	25	25	25
	Int.	30	30	30	30	30	30	30	30
Weight (kg)		9.8	10	10.3	10.7	11.1	11.6	12.3	12.6

* Continuous pressure : Max. value of operating motor continuously.

* Intermittent pressure : Max. value of operating motor in 6 seconds per minute.

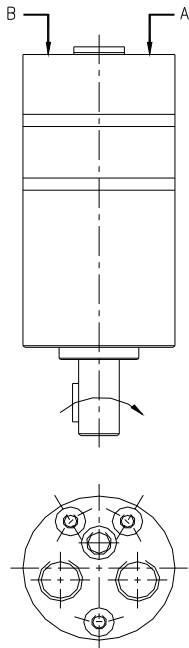
* Peak pressure : Max. value of operating motor in 0.6 second per minute.



□ **MODEL NUMBER DESIGNATION:**

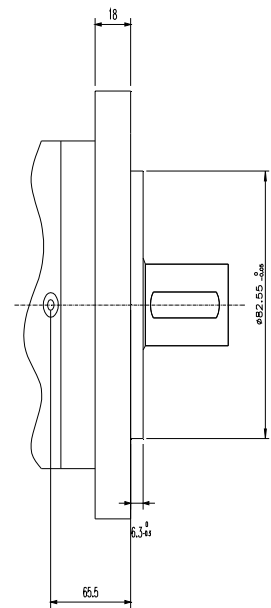
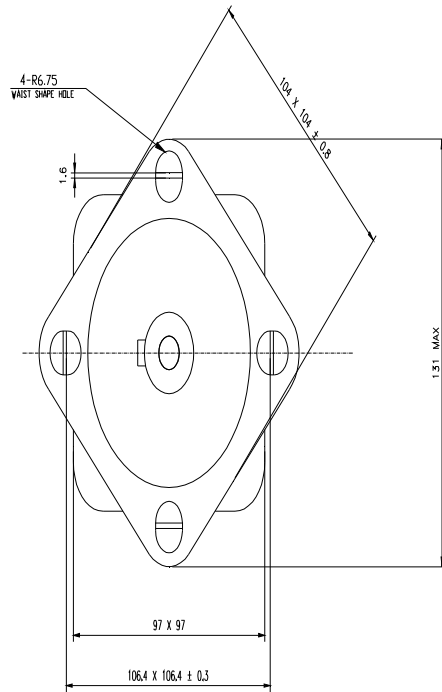
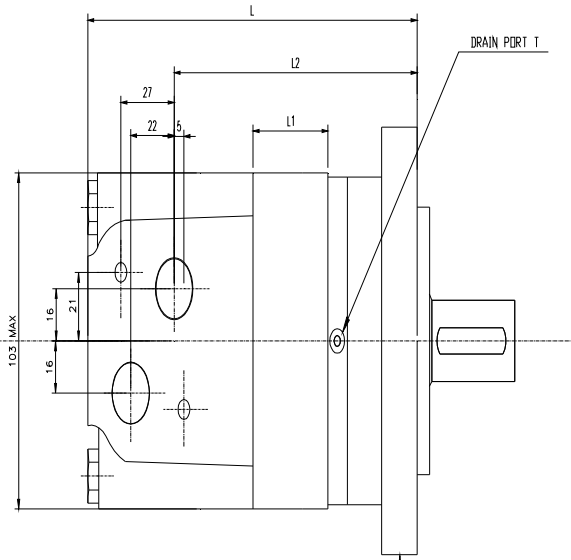
YMS	-80	-SA1	-K1	-A		-R	-00	-00	-10
Model Number	Displacement	Type of Flange Mounting	Type of Shaft	Port Sizes		Rotation Direction	Paint	Special Features	Design* Number
				Main Ports (A&B)	Drain Port	As viewed from shaft end			
YMS	80 100 125 160 200 250 315	SA1: 4 Bolt- Ø13.5x106.4 -Oval flange, spigot Ø82.5x6.3	K1: Shaft Ø32, parallel key 10x8x45	End Port G1/2	G1/4	R: Clockwise when port "A" is pressurized L: Counter- clockwise when port "B" is pressurized	00: No paint	00: Standard	10

* Design numbers subject to change but installation dimensions remain as shown.



□ **MOUNTING DETAILS:**

DIMENSIONS IN
MILLIMETRES



MODEL	L	L1	L2
BMS80	167	13	123.2
BMS100	171	17	127.2
BMS125	176	22	132.2
BMS160	181.5	27.5	137.7
BMS200	189	35.1	145.2
BMS250	201	47	157.2
BMS315	213	59	169.2
BMS375	225	71	181.2

CODE MOUNTINGS	D<DEPTH>	M<DEPTH>	S<DEPTH>	P<DEPTH>
P(A,B)	G $\frac{1}{2}$ <18>	M22X1.5<18>	7/8-14 □-RING<18>	1/2-14NPTF<15>
C	G $\frac{1}{4}$ <12>	M14X 1.5 <12>	7/16-20UNF<12>	7/16-20UNF<12>
T	2-M10<13>	2- M10 <13>	2-3/8-16UNC<13>	2-3/8-16UNC<13>

□ PERFORMANCE DATA:

YMS 100 (100.8 cm³/rev.)

PRESSURE (MPa)				Max.cont		Max.int	
3.5	7	10.5	14	17.5	21	22.5	

Flow (L/min)	PRESSURE (MPa)						
	3.5	7	10.5	14	17.5	21	22.5
15	48 146	95 144	150 139	200 135	250 130	289 120	310 105
30	45 291	94 289	146 278	198 274	250 269	295 258	317 242
40	43 387	89 384	142 374	196 359	248 350	293 335	316 320
50	40 486	88 483	135 473	194 462	247 450	292 430	315 420
60	37 588	88 584	132 574	185 562	244 550	289 538	312 520
Max.cont 75	35 740	80 735	130 720	180 705	240 696	286 676	310 653
Max.int 90	30 850	75 840	124 810	170 787	236 770	277 750	303 747

YMS 125 (125 cm³/rev.)

PRESSURE (MPa)				Max.cont		Max.int	
3.5	7	10.5	14	17.5	21	22.5	

Flow (L/min)	PRESSURE (MPa)						
	3.5	7	10.5	14	17.5	21	22.5
15	55 112	120 110	176 103	245 96	309 93	349 90	375 84
30	55 222	120 220	175 217	250 208	324 200	375 199	408 190
40	55 302	120 298	175 292	250 284	324 276	370 268	408 260
50	50 379	115 373	176 368	248 363	320 350	370 339	406 328
60	45 456	113 448	171 443	245 439	324 425	368 406	406 393
Max.cont 75	45 570	110 563	167 555	240 546	314 533	370 515	401 503
Max.int 90	40 685	105 676	162 670	237 659	309 644	365 625	398 610

YMS 80 (80.6 cm³/rev.)
YMS 160 (157.2 cm³/rev.)

		PRESSURE (MPa)			Max.cont		Max.int	
		3.5	7	10.5	14	17.5	21	22.5
Flow (L/min)	15	35 180	80 174	120 168	158 164	195 158	235 151	249 143
	30	35 362	80 352	120 346	158 338	195 330	240 322	260 310
	40	35 482	79 473	119 464	155 453	193 444	234 434	150 415
	50	30 602	77 594	117 587	153 569	192 560	232 551	248 522
Max.cont	60	28 724	77 713	117 707	153 683	192 673	232 664	247 629
	65	25 790	75 785	114 770	152 760	190 742	230 720	245 704
Max.int	80	22 980	70 965	110 950	140 920	170 891	200 860	220 830

		PRESSURE (MPa)			Max.cont		Max.int	
		3.5	7	10.5	14	17.5	21	22.5
Flow (L/min)	15	70 91	140 88	205 84	305 78	371 76	430 74	473 58
	30	75 185	150 182	214 176	321 168	380 164	427 162	490 152
	40	70 248	150 244	215 239	320 229	378 224	425 217	488 204
	50	65 312	145 308	215 304	316 294	378 288	425 280	482 270
Max.cont	60	65 375	145 371	214 365	315 357	375 346	424 336	482 323
	75	60 470	138 465	208 458	311 447	375 436	420 426	
Max.int	90	56 564	130 559	200 551	308 541	370 526	414 517	

YMS 200 (200 cm³/rev.)

		PRESSURE (MPa)			Max.cont		Max.int	
		3.5	7	10.5	14	17.5	22.5	
Flow (L/min)	15	89 73	190 71	295 68	400 64	484 60	608 52	
	30	87 148	190 146	294 143	399 140	485 135	600 127	
	40	86 193	188 191	292 189	397 186	483 181	594 172	
	50	80 247	184 245	290 243	395 240	480 235	590 226	
Max.cont	60	74 298	178 295	286 293	390 290	475 284	582 273	
	75	58 372	160 369	275 365	375 362	460 358	570 346	
Max.int	90	49 440	148 435	260 430	355 422	445 411	555 401	

		PRESSURE (MPa)			Max.cont		Max.int	
		3.5	7	10.5	14	17.5	22.5	
Flow (L/min)	15	117 58	230 55	355 52	450 51	554 47	652 46	
	30	117 118	225 117	112 348	446 109	560 107	657 106	
	40	115 160	225 156	345 152	442 150	552 146	650 142	
	50	110 202	220 239	237 338	435 234	542 231	642 249	
Max.cont	60	105 242	220 239	338 237	435 234	542 231	642 229	
	75	95 300	215 296	293 332	430 286	537 282	638 278	
Max.int	90	90 360	205 354	348 310	420 340	530 332	632 326	

YMS 315(314.5 cm³/rev.)

PRESSURE (MPa)		Max.cont			Max.int	
3.5	7	10.5	12	14	18.5	

Flow (L/min)	3.5		7		10.5		12		14		18.5	
	Max.cont	Max.int	Max.cont	Max.int	Max.cont	Max.int	Max.cont	Max.int	Max.cont	Max.int	Max.cont	Max.int
15	160 48	320 47	465 45	555 43	650 40	748 38						
30	165 94	322 92	468 90	560 89	658 86	752 85						
40	160 125	310 123	457 120	546 118	642 116	741 115						
50	155 158	305 156	450 153	538 150	637 147	736 145						
60	152 175	302 174	442 170	532 164	632 162	732 159						
Max.cont 75	145 236	295 234	436 230	525 227	628 225	726 222						
Max.int 90	132 285	280 282	430 280	520 276	622 273	723 270						

TORQUE (N.M) 622
SPEED (rpm) 273